

 Dentsply
Sirona

Software Release notes

October 2023

SureSmile® Software Release instructions

Important Note:

After every SureSmile software update, we recommend clearing your browser cache to remove any remnants of the old version to optimize software performance.

The steps to follow depend on the browser you are using, and are linked here for your convenience:

- [Steps for Google Chrome](#)
- [Steps for Mozilla Firefox](#)
- [Steps for Apple Safari](#)



October 2023 SureSmile® Software

- **Retainer workflow enhancements**
 - Improved user experience to order a retainer from a new scan in FSA cases ([Aligner platform](#))
 - Waiving of Diagnostic model fee for FSA complete cases ([Aligner & Ortho platform](#))
 - Reducing rejections on single arch retainer orders (Aligner & Ortho platform)
- **Enhanced staged timeline player**([All platforms](#))
 - Improved performance of the treatment plan animation
 - More realistic 3D model
- **Reason for new scan submission** ([All platforms](#))
- **Updated IPR tracking visualization**([All platforms](#))



Retainer workflow enhancements

1

2

3

From a new scan

From Setup & Staging

We've introduced an improved workflow for ordering SureSmile® Retainers.

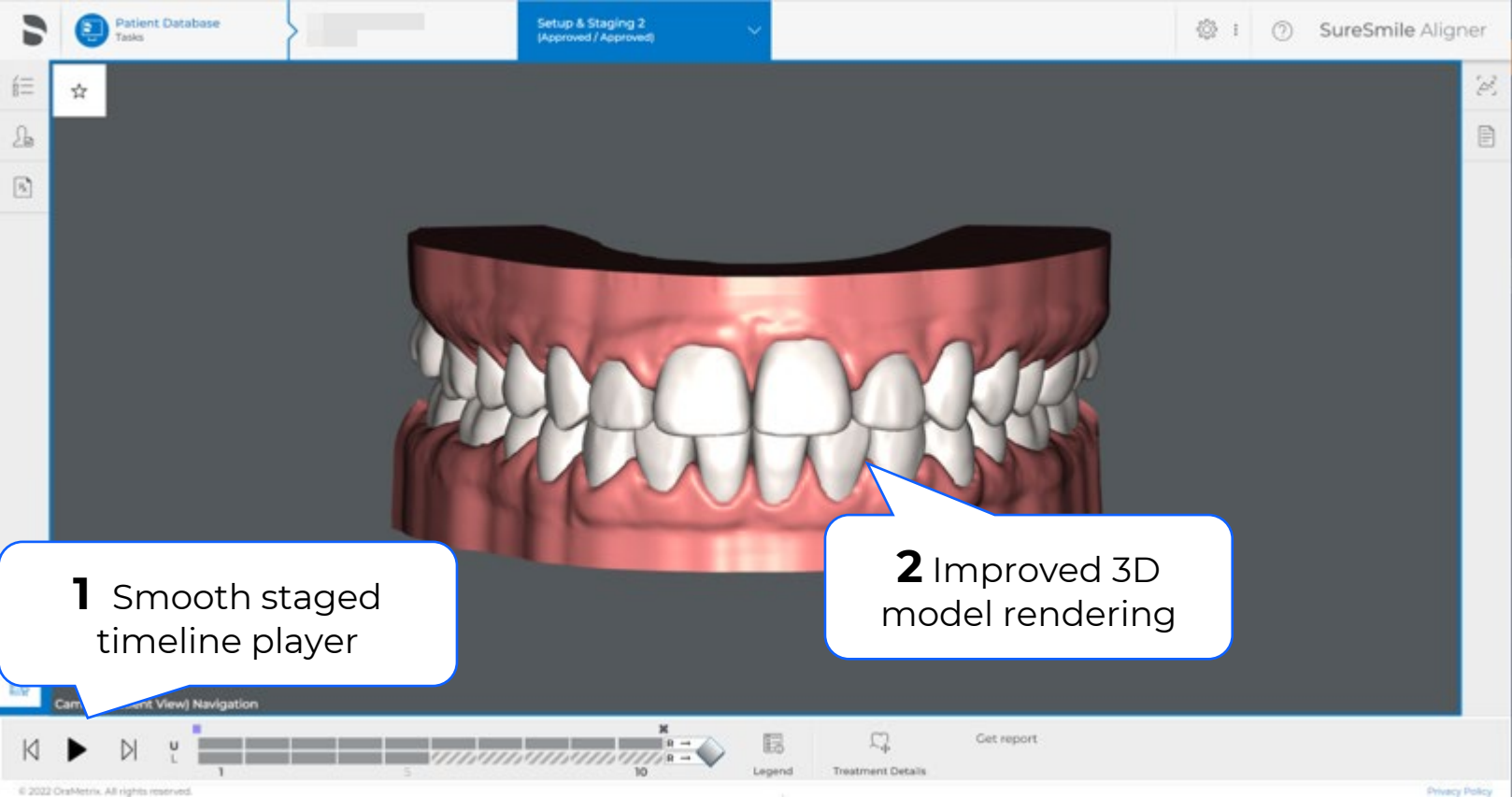
- You can now order Retainers from setup & staging in two ways: from the final stage of a SureSmile® treatment plan or a new scan.
- For Complete cases, there will be no modeling fee charged to order from a new scan.

An update at the digital lab will allow the technicians to know whether retainers are ordered for one or both arches. There is no visible change to you, but

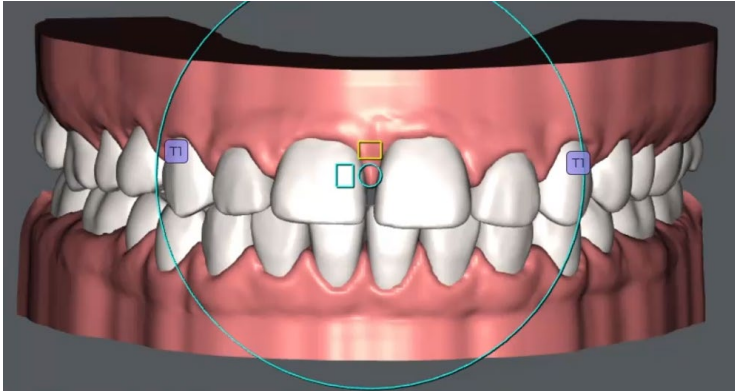
- This will help reduce the likelihood of rejections for single retainer orders when the opposing arch scan contains minor defects.



Enhanced staged timeline player



Play me



Reasons for new scan submission

Specify the reason for initiating a new scan on the prescription form of the refinement workflow. This information enables us to tailor treatment plans and training materials more effectively, ultimately enhancing your experience.

The screenshot displays a multi-step workflow for a dental refinement scan. The steps are: Patient Info, Case Package, Scan Data, Photos / X-rays, Dental Exam, Prescription (current step), and Confirmation. The Prescription step is highlighted with a blue border and contains the following sections:

- Reason:** A list of radio button options:
 - End of treatment adjustments (Fine-tune)
 - In-treatment correction
 - New treatment goal
 - Post-treatment relapse
 - Last stage aligner without attachments
 - Other
- Arches to Treat:** A dropdown menu set to "Both".
- Teeth to Treat:** A dropdown menu set to "Full Arch".
- Attachments:** Radio button options: Don't allow, Allow.
- IPR:** Radio button options: Don't allow, Allow.

On the right side of the Prescription form, there is a "Records" section with three images: a patient's smile, a frontal view of teeth, and a close-up of teeth with attachments. At the bottom of the interface are "Back" and "Next" buttons.

This input is purely informative and will have no impact on your workflow or fees.



Updated IPR Tracking tab visualization

SureSmile Software allows you to record your applied IPR in the IPR tracking tab.

- Within this release, we've updated the visualization of the IPR tracking tab, allowing you to enter the applied IPR interproximal.
- As a reminder, if you documented the applied IPR in the IPR tracking tab, the digital lab will be able to view these values when planning for a refinement

2 Use the “IPR tracking” solution to record the applied IPR.

** This buttons becomes available when a treatment plan has been approved*

	UR8	UR7	UR6	UR5	UR4	UR3	UR2	UR1	UL1	UL2	UL3	UL4	UL5	UL6	UL7	UL8
Planned							-0.2	-0.2	-0.2							
Applied																
Completed							<input checked="" type="checkbox"/>									
Completed									<input checked="" type="checkbox"/>							
Applied								-0.1		-0.1						
Planned								-0.2	-0.2	-0.2	-0.2					

IPR / Attachment / Triline

Order Retainers

Order Aligners

Order Refinement

Camera (Patient View) Navigation

1 5 10 15 20 22

Legend Treatment Details

© 2022 OraMatrix. All rights reserved.

1 Find the **IPR tracking tab** underneath “Treatment Details”



